



### Description

**Video Upgrade Interface Panel XTENDER** attaches to existing alarm panels using the panel's alarm output to auto-arm the XTENDER when the existing panel goes into alarm. As far as the homeowner is concerned, nothing changes - not the keypad, not the user interface. The operation of the existing panel is not degraded and it continues to function normally. When the existing panel is armed this also arms the XTENDER. Any movement triggers the MotionViewer sensors which immediately activate the camera, capturing an MPEG video. This means that cameras are never armed or activated unless there is an alarm - privacy is assured.

Patented wireless MotionViewer (integrated PIR motion sensor and camera) capture 10 seconds of video documenting WHAT triggered the alarm. This MPEG is sent to the monitoring station with the alarm so that personnel immediately know WHY there is an alarm.

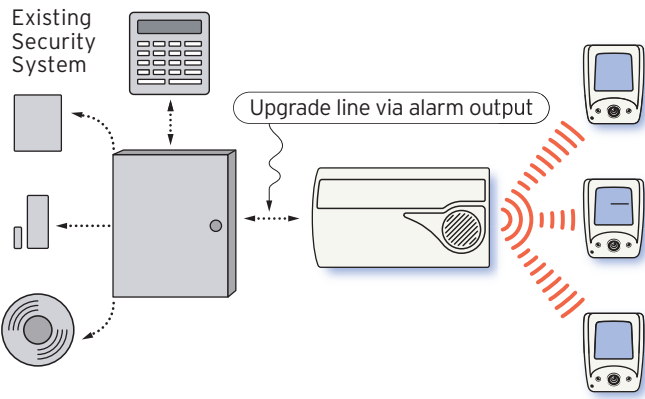
### Supervised Wireless Technology

The control panel XTENDER, along with all VIDEOFIED™ devices utilize patented S<sup>2</sup>View®-Spread Spectrum, VIDEOFIED™, Interactive, AES Encrypted Wireless technology, providing optimum signal integrity and security.

Bi-directional RF communication paths between all system devices and the system control panel assure high signal reliability. Radio jam detection identifies deliberate jamming of the system from outside parties. Integrated antennas eliminate protruding wires or rods that may be cumbersome when installing, are unsightly to consumers, and if damaged could lead to potential system communication problems.

Supervision is accomplished by signal transmissions every eight minutes between each system device (excluding Keyfobs) and the control panel. These signal transmissions identify the unique identification code along with the current open/close state, tamper condition, serial number, manufacture date, software revision and battery status.





**Video Verification On Any Existing Panel**

Incorporating MotionViewer cameras into the security system allows for video verification of intrusion alarms (only when the Frontel reporting format is selected). When the system is armed and a motion-activated camera is activated by an intruder, the camera captures a 10-second digital video clip which is sent to the central monitoring station by the control panel. Customers can also receive video clips through Email.

**Electrical Data**

RF technology	S <sup>2</sup> View®
Radio type	Bidirectional
Operating frequency	868/915/920 MHz
Transmission type	Spread spectrum
Transmission security	AES algorithm encryption
Video format	MPEG
Size	220 Kbytes
Video framing	5 frames/second
Picture format	JPEG
Picture size	320 x 240 pixels

**Installation/Mounting**

Interface Panel/Base	Two screws secure interface panel cover to base; four screws secure control panel base to the wall
----------------------	--

**Physical Data**

Material	ABS-ULV0
Dimensions	280 mm x 158 mm x 57 mm (LxWxD): 11 in. x 6-1/4 in. x 2-1/4 in.
Weight	980 g/34.5 oz. (without batteries)

**2-way Wireless Between All MotionViewer and XTENDER unit**

**Communications** XTENDER may be used with either primary or secondary line seizure - depending on whether the installation is in a non-dispatch jurisdiction or not. In areas requiring verified alarms we recommend that the XTENDER be given primary line seizure for expedited response. In either case, when there is no video the existing panel functions as before. When video is captured it is delivered to the Central Station for improved security.

**MotionViewer DCV200/DCV600/DCV700 Data**

Operating temperature	0°/+40°C (32°/104°F)
Maximum relative humidity	70%, non-condensing
Approvals	CE/EN50131/EN300220/IDA/INCERT/NCP (V1000P) FCC (V6000P) A-Tick (V7000P)
Night illumination	2 infrared LED
Night illumination distance	4.5m/14 ft.
Motion detector technology	Passive infrared
Motion detector type	Dual elements
Motion lens	Fresnel
Motion detection	90°
Motion detection distance	12 m/40 ft.

**Physical Data**

Material	ABS-ULV0
Dimensions	89 mm x 70 mm x 70 mm (LxWxD): 3-1/2 in. x 2-3/4 in. x 2-3/4 in.
Weight	150 g/5.3 oz. (without batteries)



**EMEA SALES**  
 2, rue Alexis de Tocqueville  
 92160 ANTONY  
 FRANCE  
 Phone +33 (0)1 55 59 10 25  
 Fax +33 (0)3 90 20 66 36

**USA SALES**  
 4455 White Bear Parkway, Suite 700  
 White Bear Lake, MN 55110  
 USA  
 Phone 877-206-5800  
 Fax 651-762-4693

[www.videofied.com](http://www.videofied.com)